

inovatürk®



LPG endermologie® BASED ON MECHANOBIOLOGY

NATURAL AND EFFECTIVE TREATMENTS FOR AESTHETIC MEDICINE & SURGERY

endermologie® is a non-aggressive and non-invasive technique based on Mechanobiology: high-tech mechanical stimuli performed at the skin surface are transformed into cellular signals to trigger biological responses (production of endogenous collagen, elastin, hyaluronic acid, activation of venolymphatic flow, stimulation of lipolysis)

For more than 32 years, LPG SYSTEMS (a French company) has developed medical devices dedicated to the treatment of body contours, cellulite and facial skin aging.

This mechanical stimulation technique is used in aesthetic medicine & surgery to optimize and maintain natural results and skin quality.

- › LPG® PATENTED TECHNOLOGIES
- › EVIDENCE-BASED: 145 SCIENTIFIC STUDIES INCL. 34 REGISTERED IN MEDLINE
- › SAFE: NO ADVERSE EVENTS REPORTED TO DATE
- › ISO 9001 AND 13485 CMDCAS CERTIFICATION
- › FDA CLEARED*
- › NO PAIN
- › NO DOWNTIME



A full range of endermologie® face and body treatments according to patient expectations and indications :

ALL ONE

"as an organic lifestyle, endermologie® treatment is a real anti-aging routine for face and body"

endermologie® IS A NATURAL TECHNIQUE, USED AS A BASE IN AESTHETIC MEDICINE & SURGERY TO RELAUNCH CELLULAR ACTIVITY BEFORE ANY OTHER PROCEDURES

COMBINED PRE-CO-MA-RE

- 1 **PREPARE**
2 TO 4 SESSIONS 2 WEEKS BEFORE
Oxygenate and drain liquid stasis.
Stimulate micro-circulation.
Soften and relax tissues.
› Limit side-effect risks
- 2 **COMBINE**
5 TO 8 MINUTE TREATMENT
THE D-DAY
(facial mesotherapy, HA, BT, peeling, laser, surgery...) Bring confort to patient during treatment. Facilitate injected product assimilation.
› Optimize aesthetic results
- 3 **MAINTAIN & IMPROVE**
2 WEEKS AFTER
REGULAR SESSIONS
(NO MODERATION)
Reactivate fibroblasts functions Optimize lipolysis and circulation
› Reinforce skin architecture and quality
- 4 **REPAIR ASAP**
Treat potential side effects
(edema, fibrosis, hematoma, scars...)

COSIRE



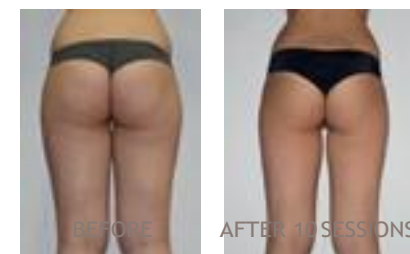
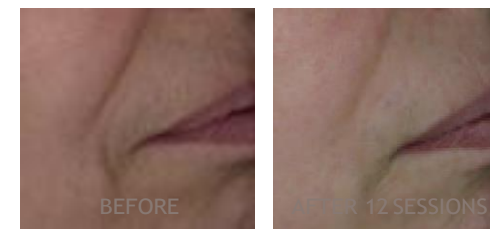
The International Scientific COmmittee of REsearch, guarantees the effectiveness and safety of LPG technologies.

Founded in 1999 and composed of renowned experts, COSIRE regularly performs biomedical studies using cutting-edge techniques to evaluate results (DNA chips, biopsies, microdialysis, electron microscopy,...).

<https://www.lpgmedical.com/en/studies/studies-cosire/>



*INDICATIONS: PAIN, CELLULITE, LIPOLYMPHEDEMA



Photos: COURTESY Raffaella TORTORA

*REVUZ J. et al. Clinical and histological effects of the Lift6® device used on facial skin ageing. *Nouv. Dermatol.* 2002 ; 21 : 335-342

+80%*
ENDOGENOUS
HYALURONIC ACID

CLARIFY
THE COMPLEXION
x2*

FILL IN FINE LINES
AND WRINKLES
87%*

FIRM FACIAL CONTOURS
70%*

FACE endermologie

REJUVENATION FROM WITHIN

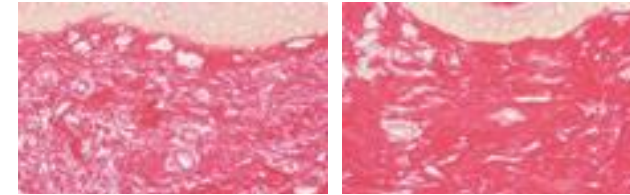
S K I N Q U A L I T Y E L A S T I N R E D E N S I F I C A T I O N *



NOT TREATED SIDE

TREATED SIDE - 20 SESSIONS

S K I N Q U A L I T Y C O L L A G E N R E D E N S I F I C A T I O N *



NOT TREATED SIDE

TREATED SIDE - 20 SESSIONS

- › SMOOTH WRINKLES AND FINE LINES
- › DRAIN SKIN TOXINS
- › STIMULATE ENDOGENOUS COLLAGEN, ELASTIN AND HYALURONIC ACID SYNTHESIS
- › RELEASE DOUBLE CHIN FAT
- › BOOST VASCULARIZATION
- › REDUCE BAGS AND DARK CIRCLES
- › REDESIGN FACIAL OVAL

*REVUZ J. et al. Clinical and histological effects of the Lift6® device used on facial skin ageing. *Nouv. Dermatol.* 2002 ; 21 : 335-342

SAGGING SKIN

RF, surgery, blepharoplasty, lifting, threads, ultrasound

LOSS OF VOLUME

Fillers, fat grafting...

SCARS, EDEMA,

PAIN

TEXTURAL CHANGES

Botulinum toxins injection, lasers, peels, LED, PRP, carboxytherapy,

FACE INDICATIONS

Possible combinations

HAIR

TRANSPLANTATION

LPG endermologie® TARGETS THE MAIN CAUSES OF AGING BY REACTIVATING FIBROBLAST FUNCTIONS AND CIRCULATORY EXCHANGES, AIMING TO IMPROVE CUTANEOUS HOMEOSTASIS AND TROPHICITY

PRINCIPLE OF ACTION

The Ergolift™ treatment head combines sequential aspiration with adjustable Lift pulse speeds to stimulate all thin tissues of face, neck, décolleté, and hands.



COMPLICATION AFTER BLEPHAROPLASTY



AFTER 3 SESSIONS



AFTER 14 SESSIONS

Photos : COURTESY Carla PULETTI (IT)

*HUMBERT P. et al. Mécano-Stimulation™ of the skin improves sagging score and induces beneficial functional modification of the fibroblasts: clinical, biological, and histological evaluations. *Clin Interv Aging.* 2015; 10: 387-403.

THE STANDARD OF CARE IN BODY-CONTOURING

CELLULITE SURFACE REDUCED BY 20%



BEFORE

AFTER 16 SESSIONS

ORTONNE J.P. et al. Treatment of cellulite: Effectiveness and sustained effect at 6 months with endermologie® demonstrated by several quantitative evaluation methods. *Nouv. Dermatol.* 2004; 23 : 261-269

- › RELEASE LOCALIZED AND RESISTANT FAT
- › SMOOTH CELLULITE
- › RESCULPT VOLUMES
- › DRAIN TISSUES
- › REDENSIFY SKIN
- › PRE- AND POST-LIPOSUCTION
- › FDA CLEARED

LPG endermologie® REACTIVATES ADIPOCYTES' NATURAL LIPOLYSIS, REDUCES FAT RELEASE AND DRAINS LIQUID FIBROSIS AND IN ORDER TO SMOOTH CELLULITE AND REDUCE BODY CIRCUMFERENCES. THIS TECHNIQUE ALSO HELPS TO FIRM UP TISSUE.

PRINCIPLE OF ACTION

endermologie® treatment head combines motorized roller and flap (LPG® patent) allowing different settings in order to adapt treatment to indication and tissue's state.



COMPLICATIONS AFTER ABDOMINOPLASTY

AFTER 22 LPG SESSIONS (6 weeks of treatment)

LASTING RESULTS WITH 2MM CANULA, 4 SESSIONS . endermologie® IN BETWEEN SESSIONS AND POST-OP.



BEFORE

AFTER

Photos: COURTESY DR. MAJANI

+70%*
IMPROVE NATURAL LIPOLYSIS

FIRM THE SKIN
71%**

-5.2cm**
WAISTLINE CIRCUMFERENCE

SMOOTH ORANGE-PEEL SKIN
67%**

CELLULITE

Acoustic wave therapy, intense pulse light, infrared, radiofrequency, carboxytherapy, mesotherapy,...

LOCALIZED FAT

Liposuction, cryolipolysis,...

SAGGING SKIN

surgery, abdominoplasty, radiofrequency, lasers, ultrasound,...

WATER RETENTION

BODY INDICATIONS

Possible combinations

SCARS, EDEMA, PAIN

*LAFONTAN M. et al. Impact of mechanical massage on gene expression profile and lipid mobilization in female gluteofemoral adipose tissue. *Obes Facts.* 2011; 4(2):121-9.
**endermologie® study DermScan 2016.

FOR A CUSTOMIZED SOLUTION

**CELLU M6
ALLIANCE®
ESTHÉTIQUE
MÉDICAL**



**CELLU M6
ALLIANCE® LAB
ESTHÉTIQUE
MÉDICAL**



**BEAUTY / MEDICAL / AESTHETIC MEDICAL
PROTOCOLS**

BODY endermologie®

- Alliance® 80 treatment head
- Alliance® 50 treatment head
- TR50 therapeutic treatment head
- TR30 motorized treatment head
- TR30 treatment head

- | | |
|---|---|
| • | • |
| • | • |
| • | • |
| • | • |
| • | • |

FACE endermologie®

- Ergolift treatment head
- Micro-nozzles and micro-heads

- | | |
|---|---|
| • | • |
| • | • |

**TECHNICAL
SPECIFICATIONS**

- Weight
- Dimensions (W x l x h)
- Colour touchscreen
- 3D graphical interface
- Device connectivity

- | | |
|---------------------|----------------------|
| 80.5 kg | 192 kg |
| 865 x 780 x 1560 mm | 2080 x 680 x 1470 mm |
| • | • |
| • | • |
| • | • |

Connected tablet

- | | |
|---|---|
| • | • |
|---|---|

REMAIN CONNECTED



The connected tablet allows you to keep in touch with LPG®'s expertise and services:

- Training > Marketing/communication
- After Sales service > On-line updates

**1 - ALLIANCE 50
TREATMENT HEAD**

For large areas and thicker tissue (fibrosis, edema, inflammation...)



**1 - ALLIANCE 80
TREATMENT HEAD**

For in-depth action on large areas (beauty treatments)



**3 - TR30 MOTORIZED
TREATMENT HEAD**

For access to smaller and delicate areas (lesions, scars...)



**4 - ERGOLIFT
TREATMENT HEAD**

LIFT 10 : small areas, eye and lip contours, hands, fingers...

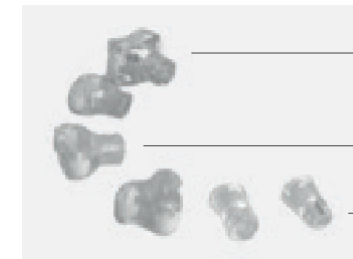
LIFT 20 : large areas of thin and sensitive tissue



TR15

MICRO-HEADS

MICRO-NOZZLES



**5 - TR15 - MICRO-NOZZLES
AND MICRO-HEADS**

For micro-targeted therapeutic action (hands for example)



inovatürk

NATURAL AND EFFECTIVE TREATMENTS FOR AESTHETIC MEDICINE & SURGERY



+90 (212) 210 20 20



info@inovaturk.com.tr



www.inovaturk.com.tr

Ataşehir bulvarı, Atatürk Mah. Evinpark Rezidans No:23 a-1 blok d.24 Ataşehir / İSTANBUL